



Scan for full manual

VIA Campus² Quick Start Guide

For Installer

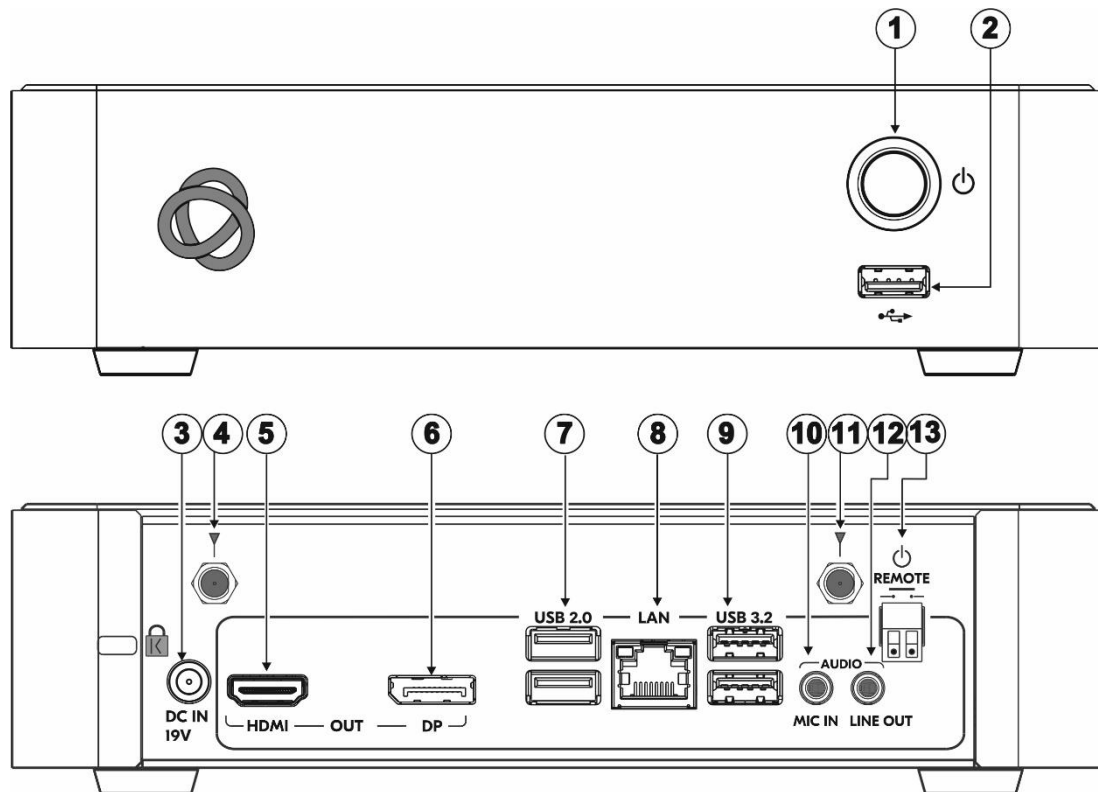
This guide helps you install and configure your VIA Campus² for the first time.

Go to [www.kramerav.com/product/VIA_Campus²](http://www.kramerav.com/product/VIA_Campus2) to download the latest user manual and check if firmware upgrades are available.

Step 1: Check what's in the box

- ✓ VIA Campus² collaboration device
- ✓ 1 Power adapter (19V DC)
- ✓ 2 Wi-Fi antennas
- ✓ 1 Quick start guide

Step 2: Get to know your VIA Campus²



#	Feature	Function
1	Power Button	Turns the machine on and off. Logo lights when the unit is turned on.
2	USB 2.0 Connector	For connecting a USB device.
3	DC IN 19V Connector	Connects to the 19V DC power adapter.
4	Wi-Fi Antenna Port (1 of 2)	Connect one of the Wi-Fi antennas for collaborating via the built-in Wi-Fi.
5	HDMI OUT Connector	Connect to an HDMI display.
6	DP OUT Connector	Connect to a DisplayPort display.
7	USB 2.0 Connectors	Connect to up to 2 USB devices.
8	LAN RJ-45 Connector	Connect a Local Area Network (LAN) cable
9	USB 3.2 Connectors	Connect to up to 2 USB devices.
10	AUDIO MIC IN 3.5mm Jack	Connect to a microphone.
11	Wi-Fi Antenna Port (2 of 2)	Connect one of the Wi-Fi antennas for collaborating via the built-in Wi-Fi.
12	AUDIO LINE OUT 3.5mm Jack	Connect to an unbalanced stereo audio acceptor.
13	REMOTE 2-pin Terminal Block	Connect to a toggle switch to remotely turn the device on and off.

Step 3: Mount VIA Campus²

Install **VIA Campus²** using one of the following methods:

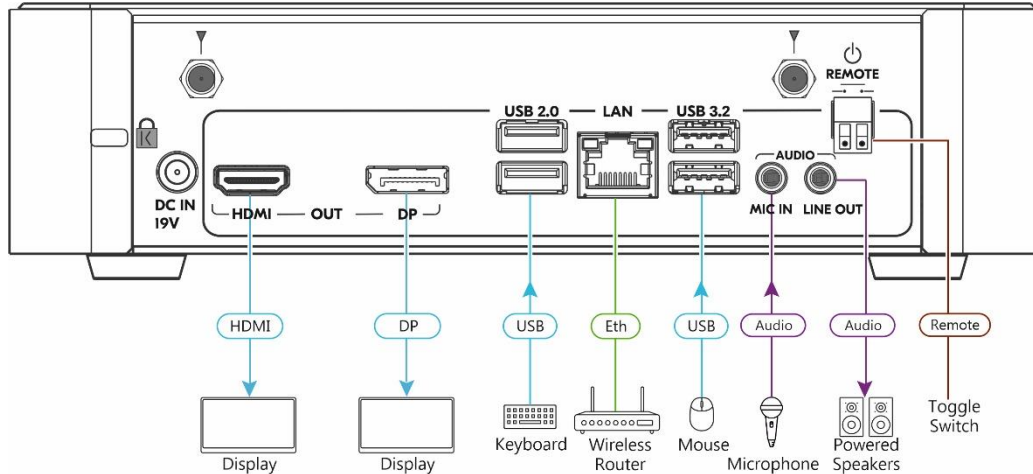
- Mount the unit in a rack using the recommended rack adapter (see [www.kramerav.com/product/VIA_Campus²](http://www.kramerav.com/product/VIA_Campus2) Accessories tab).
- Place the device on a flat surface.



Ensure that the environment (e.g., maximum ambient temperature & air flow) is compatible for the device. Avoid uneven mechanical loading. Appropriate consideration of equipment nameplate ratings should be used for avoiding overloading of the circuits. Reliable earthing of rack-mounted equipment should be maintained.

Step 4: Connect inputs and outputs

Always switch OFF the power on each device before connecting it to your **VIA Campus²**.



1. Connect the keyboard and mouse.
2. Connect an HDMI display and/or a DisplayPort display. To configure a dual display, see “Configuring dual displays” in the User Manual.
3. Connect a Local Area Network (LAN) cable for connection to your network.
4. Connect the Wi-Fi antennas for using the built-in wireless capability.
5. Connect powered speakers and a microphone.



To achieve specified extension distances, use the Kramer cables in [www.kramerav.com/product/VIA_Campus²](http://www.kramerav.com/product/VIA_Campus2), select the Cables tab. Using third-party cables may cause damage!

Step 5: Connect power

Connect the 19V DC power adapter to **VIA Campus²** and plug it into the mains electricity.



- Caution:** There are no operator serviceable parts inside the unit.
 - Caution:** The device is intended to be installed at a height of 2 meters or less.
 - Warning:** Use only the Kramer Electronics power adapter that is provided with the unit.
 - Warning:** Disconnect the power and unplug the unit from the wall before installing.
- See www.KramerAV.com for updated safety information.

Step 6: Configure VIA Campus²

For more information about configuration see “**For Web Administrator: Gateway Management pages**” in the User Manual at https://www.kramerav.com/product/VIA_Campus2#Tab_Resources.

1. Click the VIA tile at the bottom left of the screen: The Gateway Dashboard will open.
2. On the **Kramer Gateway Dashboard**, click **Settings**: The login window appears.
3. Enter the User Name (default = su) and Password (default = supass) and click **Login**: The VIA Settings window appears.

The VIA Settings tabs are:

- LAN Settings – Configure network parameters (default = DHCP allocated IP).
 - System Controls – Manage your display and audio settings.
 - Wi-Fi – Choose **AP Mode** or **Client Mode**: AP Mode sets **VIA Campus²** as an independent Wi-Fi network, Client Mode connects the **VIA Campus²** to an existing Wi-Fi network, making it a secondary access point for guests.
4. When you have finished configuring settings, click **Reboot** to apply all settings.



Scan for full manual

VIA Campus² Quick Start Guide For User

This guide provides a quick overview of how to join a VIA Campus² meeting for the first time.

Go to [www.kramerav.com/product/VIA Campus²](http://www.kramerav.com/product/VIA Campus2) (Resources tab) to download the full user manual.

Step 1: Connect your personal device to the correct network

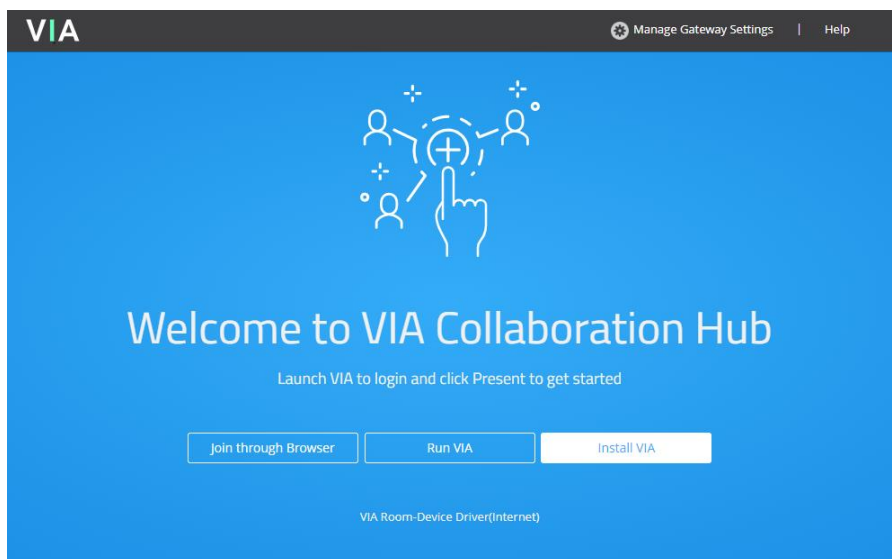
Connect your personal device to the built-in VIA Campus² Wi-Fi network or to the same LAN / Wi-Fi network used by the VIA Campus² device in your meeting room.

Step 2: Run or download the Kramer VIA app

See “Installing or Running the VIA app” in the User Manual.

For Mac or Windows:

1. Enter the Room Name or IP of the VIA Campus² device in your computer's browser. The Welcome page appears.



Download Android
VIA app



Download iOS
VIA app

2. Click **Run VIA** to execute the **Kramer VIA** app without downloading it (for guests using VIA temporarily). OR click **Install VIA** to download the **Kramer VIA** app onto your computer (for regular users of VIA).
3. Click **VIA Room-Device Driver(Internet)** – The link is below Run VIA - If you want to use peripheral devices such as a room's camera, microphone or speaker, this installs driver software (previously known as Versa) to connect the devices to the VIA app. The driver only needs to be installed once and can also be downloaded from the VIA app.

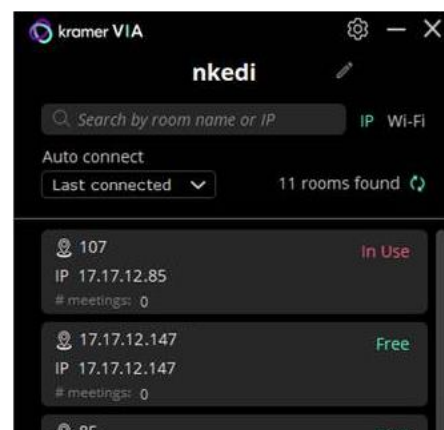
For iOS or Android devices: Download and install the free Kramer VIA app from the Apple App Store or Google Play.

For Chromebook or Chrome Browser: Click Join through browser on the Welcome page.

Step 3: Join the meeting using the Kramer VIA App

See “Joining a Room with the VIA app” in the User Manual.

1. Open the Kramer VIA app and select the meeting room name or IP. The Room Code window appears.
2. In the Room Code field, enter the 4-digit code as it appears on the main display (if enabled).
3. You are logged into the VIA meeting. The VIA Dashboard (and taskbar icon for laptops) appears on your device screen.

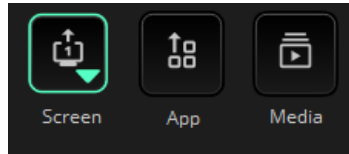


Step 4: Using the VIA dashboard menu

For more information see “Presenting from the VIA User Dashboard” in the User Manual.

1. Select what you want to share:

- **Screen** – Share your screen. On Windows the down arrow adds the Main display as a second screen.
- **App** – Share a window or app that you are using.
- **Media** – Share (stream) a media file.
- **HDMI** – Use a physical HDMI connection to display your screen.

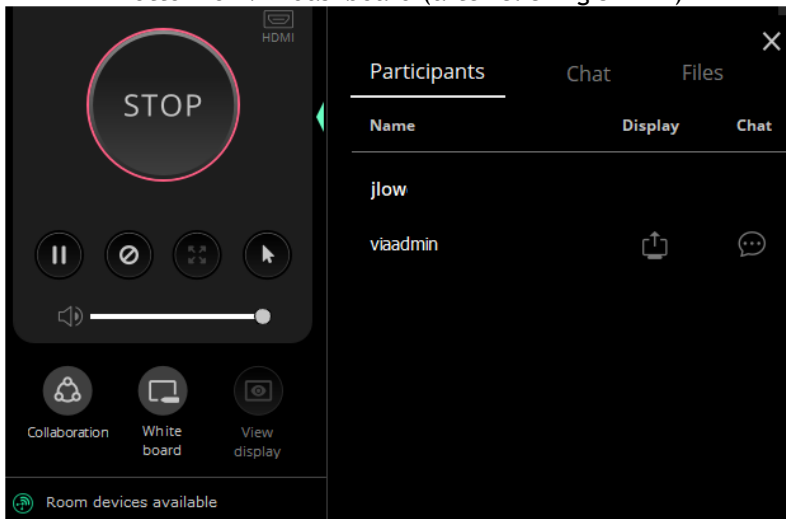


2. Click SHARE:

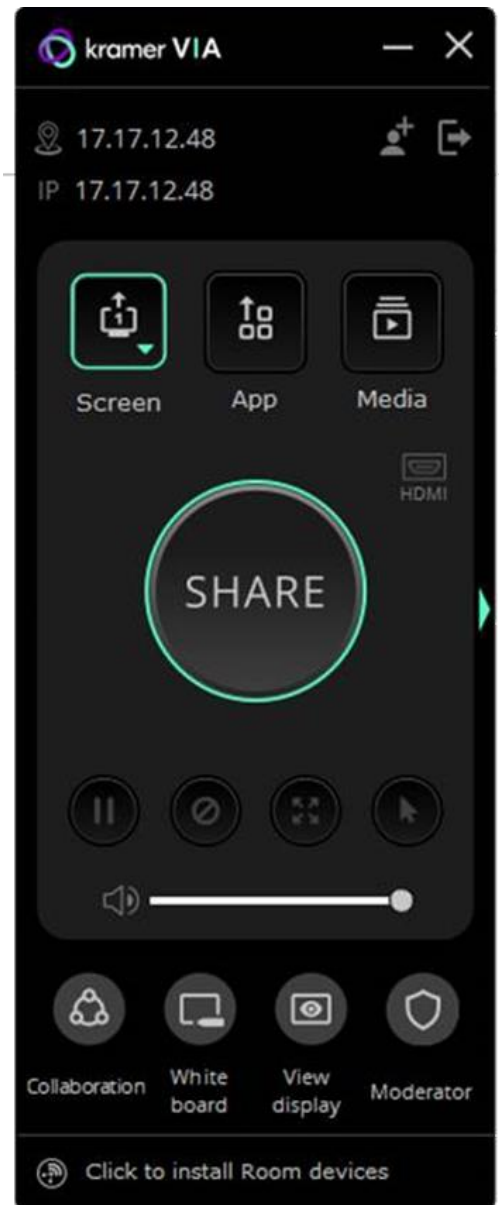
- The SHARE button becomes the STOP button.
- Your screen, app or media will be displayed to meeting participants on the main display.

3. Click the green arrow on the right to view participants, chat or send files.

Bottom of VIA dashboard (after clicking SHARE)



VIA Dashboard



4. Use the buttons below STOP to control sharing (active buttons are green):

- **Pause sharing** –Your screen freezes on the main display (the VIA app is minimized).
- **Present privately**—No one else can present (was “Do Not Disturb”).
- **Remove other presenters.**
- **Allow remote control** – Enable other users to control your device (you must first press the Collaboration button).

5. Use the buttons at the bottom for collaboration with other participants:

- **Collaboration** – Adds a mouse icon with your name on the main display, colored blue if collaborating.
- **White board** – Opens drawing / annotation controls on the main display, colored green if active.
- **View display** – View a copy of the Main Display on your personal device (not if presenting).
- **Moderator** – Visible if Moderating is permitted, orange when moderating.

6. Click STOP to end sharing.

Specifications are subject to change without notice at www.kramerav.com

The terms HDMI, HDMI High-Definition Multimedia Interface, and the HDMI Logo are trademarks or registered trademarks of HDMI Licensing Administrator, Inc.